

# MAGNA

# AUTOMATIC DIESEL FIRED DRYERS

## HIGH CAPACITY, FASTER LOADING, GREATER THROUGHPUT, FASTER DRYING...

The OPICO range of Magna dryers are specifically designed with UK farmers' crops and needs in mind.

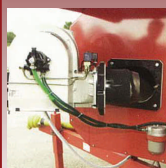
Providing efficient, clean, diesel fired drying these fully automated models can be set up in conjunction with a wet holding bin and will load, dry, cool and unload automatically giving unattended drying hour after hour, 7 days a week.

In today's climate automated drying with minimal labour requirement allows far better usage of any farms resources.

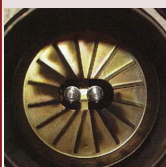
Working continuously the 2000QF is capable of drying over 1500 tons a week... the Magna dryers add another dimension to the OPICO range.



- Stainless steel perforated screens, 1.5mm on the outside and 2.5mm on the inner plenum providing maximum airflow without compromise (particularly important when drying rape).
- Fully automated computer controls with 65m compatibility.
- The pressure at which the centrifugal fans work ensures that the air produced is driven through even the densest and wettest crops.
- A grain sampler comes as standard.
- Some bespoke alterations can be made to the dryer if required-Ask for details.



A highly efficient modulating diesel burner is easily accessible for servicing, simply remove the securing nut and swing the burner out for ease of maintenance



In the servicing position the high and low flame jets are easily accessible. The air mixture can be altered when in working position.



All Magna dryers are fitted with a DUAX Heat Core Burner. This uses heat retaining bricks similar to those in a storage heater, to heat the air as well as the burner. Inside the burner chamber is a steel barrel which is lined with the heat bricks. As the heat bricks build up temperature, the whole burner core heats air as it is drawn past into the fan

Electric drive requires 3-phase, 125 amp supply. Supply line to include 3-phases, earth and neutral on a dedicated circuit via residual current device and should be fitted by a qualified electrician. Supply cable must not exceed 25 mtrs in length, minimum 25mm core.

### Six electric motors:

- 22.5kw - centrifugal fan
- 11.2kw - central auger
- 7.5kw - loading auger
- 3kw - discharge auger
- 2.2kw - agitator
- 1.1kw - burner

## SPECIFICATIONS - AUTOMATIC MODELS

Model	1200QF	2000QF
Drying capacity (21-16%)	6t/hr	10t/hr
Holding capacity	12t - 16m <sup>3</sup>	20t - 27m <sup>3</sup>
Height - transport position	4.2m (13'9")	4.35m (14'3")
Height - working position	5.1m (16'9")	6.29m (20'8")
Width	2.55m (8'4")	3.2m (10'6")
Overall length	6.1m (20')	7.2m (23'7")
Weight - empty	kgs	5200 kgs
Grain wall thickness	500mm (19¾")	500mm (19¾")
Vertical auger size	368mm (14½")	368mm (14½")
Loading auger size	200mm (8")	250 mm (10")
Size of burner (max BTU/hr)	3,000,000 BTU/hr	4,000,000 BTU/hr
Fan type and size	Centrifugal ø 710mm (28")	Centrifugal ø 800mm (31½")
PTO speed	470 rpm	470rpm
Recirculating time	90 t/hr (8 min)	120t/hr (10 min)
Loading rate	50 t/hr (12 min)	100 t/hr (12 min)
Unloading rate	80 t/hr (9 min)	100 t/hr (12 min)
Fan drive	Belt	Belt
Fan rating CFM and Outlet static pressure	35,000 m <sup>3</sup> /hr @ 95mm 20,600 CFM @ 3.75"	55,000 m <sup>3</sup> /hr @ 100mm 32,375 CFM @ 4"
Power required	45 mw (60 hp)	59.5 kw (80 hp)
Diesel Tank	460 litres	670 litres

\*\* Throughput per hour assumed 5% moisture reduction from 21% to 16%. Includes loading, heating, cooling and unloading time.



PROFIT FROM OUR KNOWLEDGE

### OPICO LIMITED

Cherry Holt Road Bourne  
Lincolnshire PE10 9LA

Tel: 01778 421111  
Fax: 01778 425080  
email: ask@opico.co.uk  
www.opico.co.uk