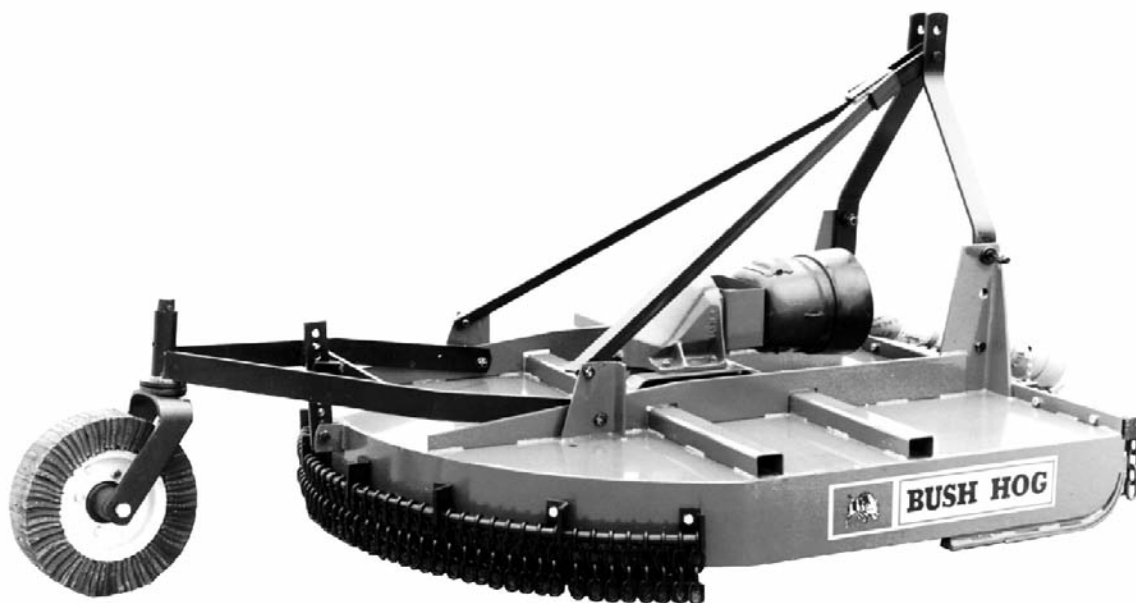


BUSH HOG[®]

LAND MAINTENANCE REPAIR PARTS MANUAL

**MODEL: 12 ROTARY CUTTER
SECTION: 14**



BUSH HOG[®]

P.O. Box 1039 • Selma, AL 36702-1039

(334) 872-6261 • (334) 874-2700

Parts Ordering 1-800-304-2836

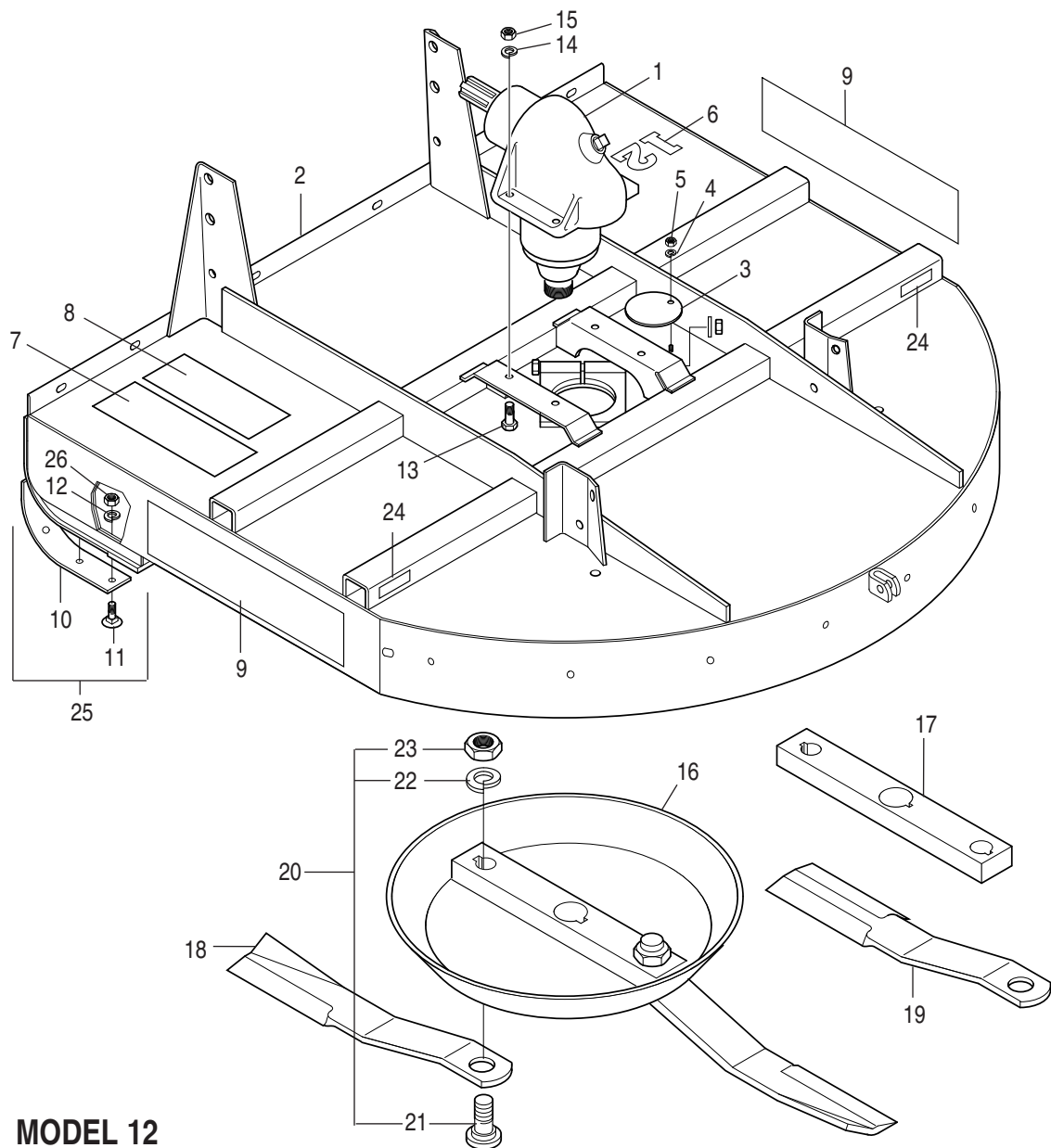
Fax 1-800-572-1784

www.bushhog.com

MODEL 12

ALPHABETICAL INDEX

CONTENTS	PAGE
"A" Frame Assembly (Lift Type).....	14-1-8
Base Assembly	14-1-1
Blade	14-1-1
Chains; Highway, Front Deflector, Front Guard.....	14-1-12
Clutch; Slip	14-1-5
Decals	14-1-1
Driveshafts	14-1-4 through 14-1-7
Frame; Tailwheel.....	14-1-9
Gearbox (Current)	14-1-2
Gearbox (Obsolete).....	14-1-3
Holder, Blade	14-1-1
Link, Flexible	14-1-8
Shields	14-1-11
Skid	14-1-1
Tailwheel	14-1-10
Wrench, Blade Nut.....	14-1-8

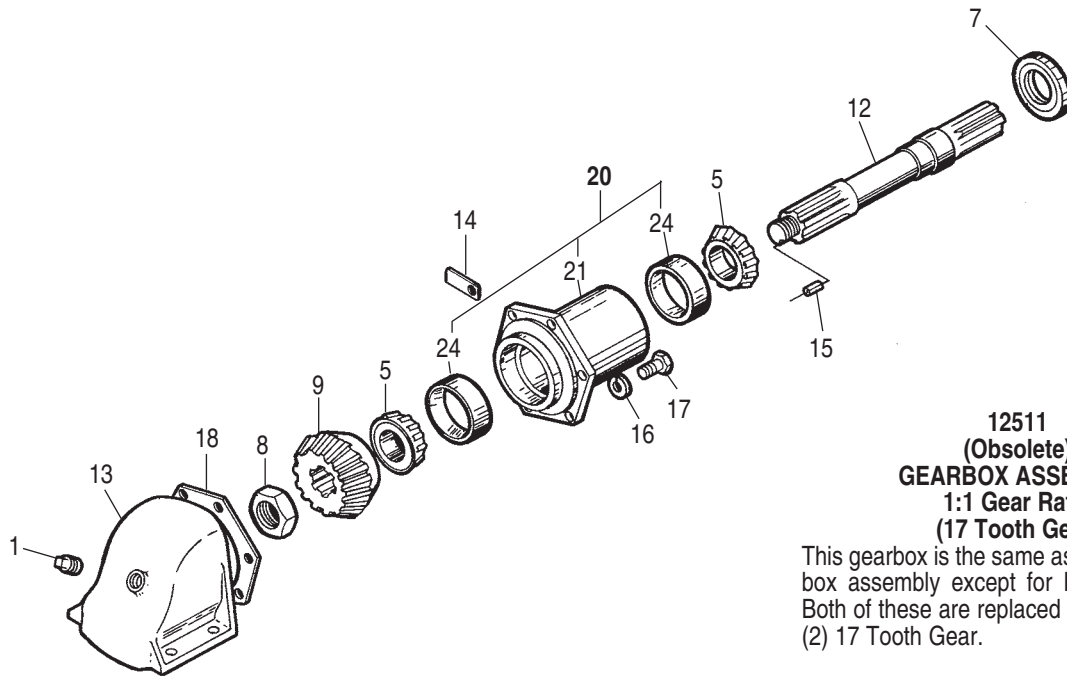


**MODEL 12
BASE ASSEMBLY**

REF. NO.	PART NO.	QTY.	DESCRIPTION
1	12523	1	*Gearbox Assy.
2	93537	1	Deck Weld. w/Decals
3	298	1	Inspection Plate
4	—	1	Lockwasher 5/16"
5	—	1	Hex Nut 5/16"
6	50023461	1	Model Decal
7	50029417	1	Sheet Decal
8	50029418	1	Sheet Decal
9	50061049	2	Bush Hog Decal
10	50040370	2	Skid Shoe
11	03161212	6	Plow Bolt 3/8" x 1-1/4"
12	—	6	Lockwasher 3/8"

REF. NO.	PART NO.	QTY.	DESCRIPTION
13	—	4	Capscrew 1/2" x 1-3/4" Gr. 5
14	—	4	Lockwasher 1/2"
15	—	4	Hex Nut 1/2"
16	255	1	Round Pan
17	254	1	Straight Bar
18	7555	2	Blade, Uplift (Standard)
19	6739	2	Blade, Non Uplift
20	63607	2	Blade Bolt Kit
21	7919	1	Blade Bolt
22	20322	1	Lockwasher 1-1/8"
23	252	1	Jam Nut 1-1/8"
24	50031213	2	Red Reflector
25	96853	2	Skid Kit
26	—	6	Hex Nut 3/8"
	93538	1	Decal Kit (Item 6-9, 24)

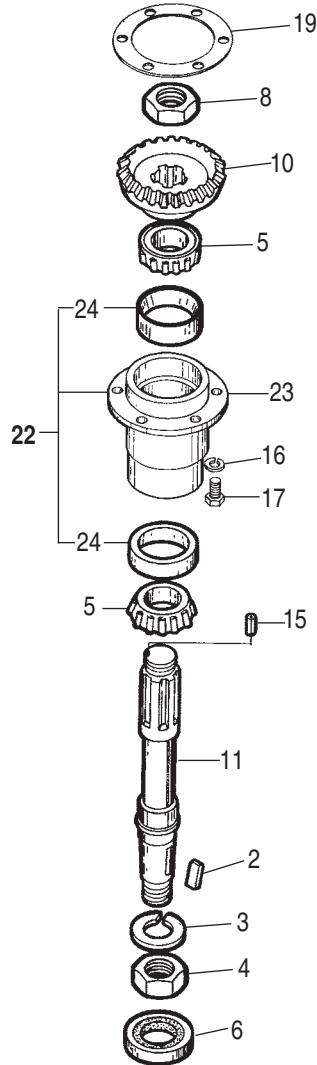
*Early model gearboxes measured 3-3/4" between mounting holes. The current gearbox measures 5" between centers.



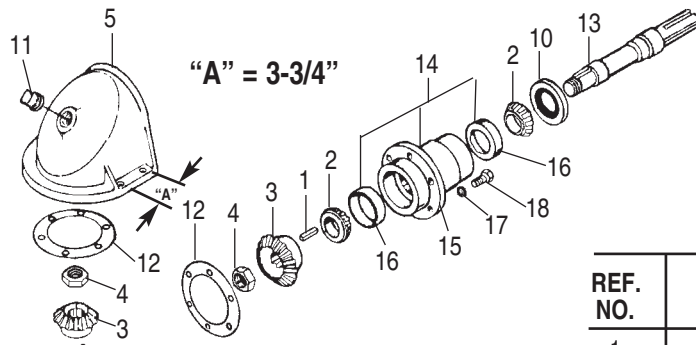
**12511
(Obsolete)
GEARBOX ASSEMBLY
1:1 Gear Ratio
(17 Tooth Gear)**

This gearbox is the same as the 12523 gear-
box assembly except for Ref. No. 9 & 10.
Both of these are replaced by Part No. 6122
(2) 17 Tooth Gear.

**12523 GEARBOX ASSEMBLY
1.43: 1 Gear Ratio
(16 & 23 Tooth)**



REF. NO.	PART NO.	QTY.	DESCRIPTION
1	28	1	Pipe Plug
2	33	1	Key
3	37	1	Lockwasher (For Old 1-1/4" L.H. Nut)
4	44096	1	Lockwasher (For New 1-3/8" R.H. Nut)
	38	1	Nut (For Old 1-1/4" - 12 UNF L.H. Thread Shaft)
	61482	1	Nut (For New 1-3/8" - 12 UNF R.H. Thd. Shaft)
5	92	4	Bearing Cone
6	1007	2	Seal
7	1008	1	Seal
8	1257	1	Gear Nut (For Old 1-3/8" - 18 UNEF Thd. Shaft)
	61483	1	Gear Nut (For New 1-3/8" - 12 UNF Thd. Shaft)
9	6120	1	Pinion (16 Tooth)
10	6121	1	Gear (23 Tooth)
11	61670	1	Shaft Kit (Replaces 6202 Shaft)
12	61676	1	Shaft Kit (Replaces 6891 Shaft)
13	12493	1	Center Housing
14	12524	1	Identification Tag
15	15392	2	Roll Pin 3/16" x 3/4"
16	—	12	Lockwasher 1/2"
17	20005	12	Eslok Bolt 1/2" x 1-1/2" Gr. 5
18	6248-2	A/R	Shim
19	6249-2	A/R	Shim
20	1872	1	Top End Housing Assembly
21	6447	1	Top End Housing
22	7997	1	Lower Housing Assembly
23	23	1	Lower Housing
24	93	4	Bearing Cup

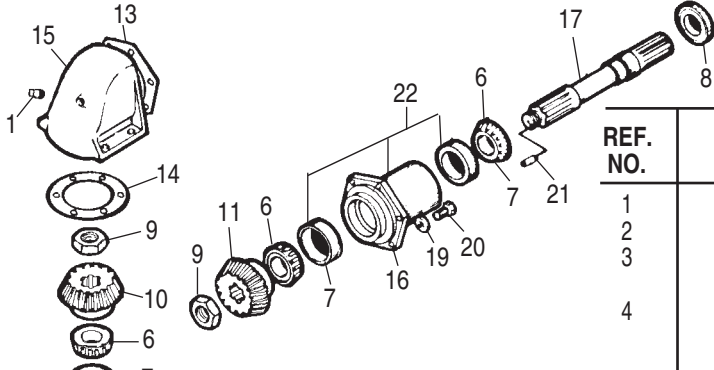


**186
(OBSOLETE)
GEARBOX ASSEMBLY
1:1 Gear Ratio (17 Teeth)
Early Model 12**

**187
(OBSOLETE)
GEARBOX ASSEMBLY
1.25: 1 Gear Ratio
(21 & 15 Tooth Gears)**

This gearbox assembly is the same as the 186 gearbox assembly except for the gears. The top gear is Part No. 88 21 Tooth Gear, the bottom gear is Part No. 8915 Tooth Gear.

REF. NO.	PART NO.	QTY.	DESCRIPTION
1	19	2	Key
2	20	4	Bearing Cone
3	24	2	Gear 17 Tooth
4	26	2	Gear Nut (1-11/64" - 18 UNEF Threads)
	61484	2	Gear Nut (1-3/16" - 12 UNF Threads)
5	29	1	Center Housing
6	61666	1	Shaft Kit (For Old 32 Shaft)
7	33	1	Key
8	37	1	Lockwasher (For Old 1-1/4" L.H. Nut)
	44096	1	Lockwasher (For New 1-3/8" R.H. Nut)
9	38	1	Nut (For Old 1-1/4"-12 UNF L.H. Threads)
	61482	1	Nut (For New 1-3/8"-12 UNF R.H. Threads)
10	1008	3	Grease Seal
11	28	1	Plug
12	6249-2	A/R	Shim
13	61665	1	Shaft Kit
14	7998	2	End Housing w/Cups
15	23	2	End Housing Less Cups
16	21	4	Bearing Cup
17	—	12	Lockwasher 1/2"
18	20005	12	Bolt 1/2" x 1-1/2" Gr. 5



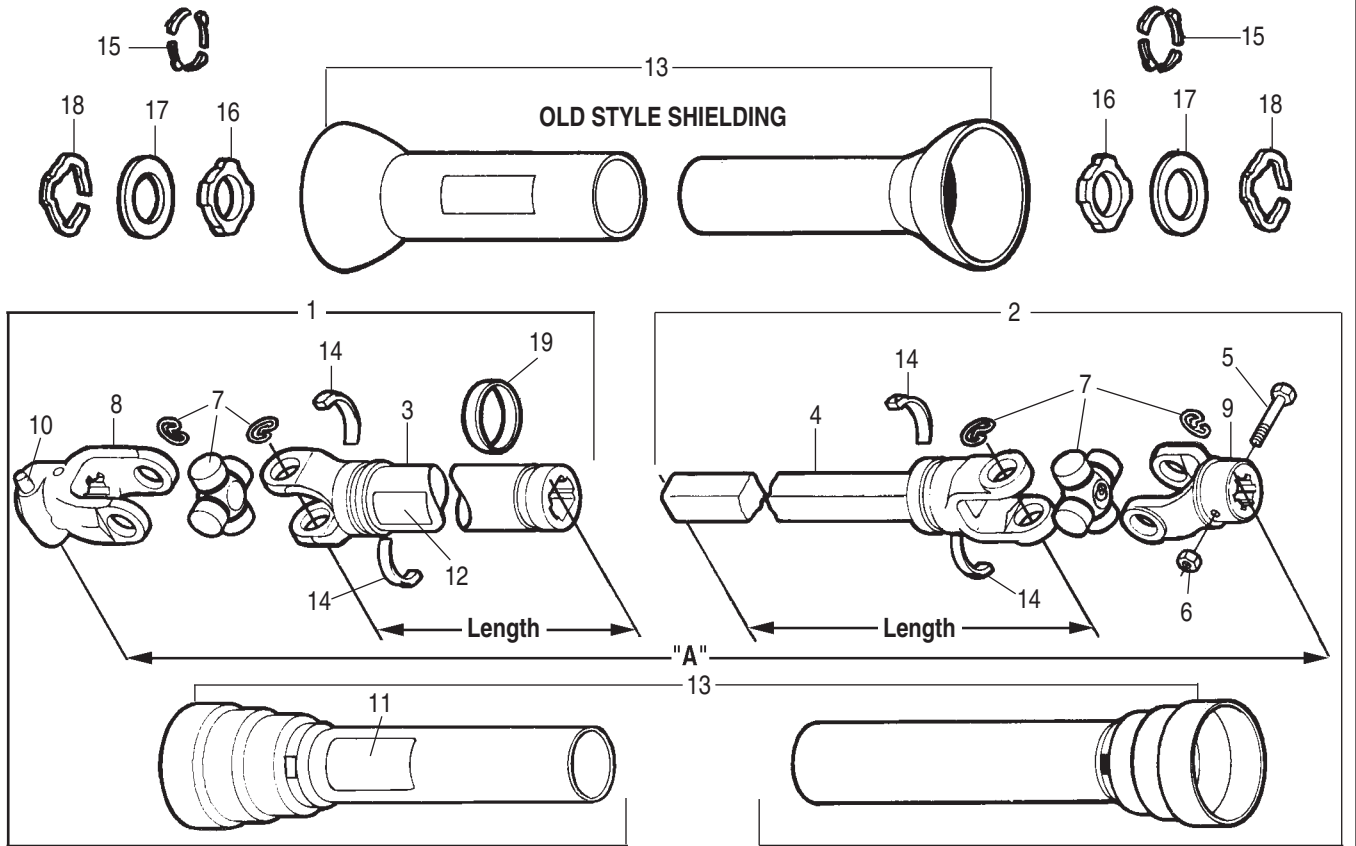
**(OBSOLETE)
6180 GEARBOX ASSEMBLY
1:1 Gear Ratio (17 Teeth)**

**(OBSOLETE)
6030 GEARBOX ASSEMBLY
1.43:1 Gear Ratio**

The part in this gearbox assembly are the same as in the 6180 Gearbox Assembly except for the numbers.

10	6120	1	Gear 16T
11	6121	1	Gear 23T

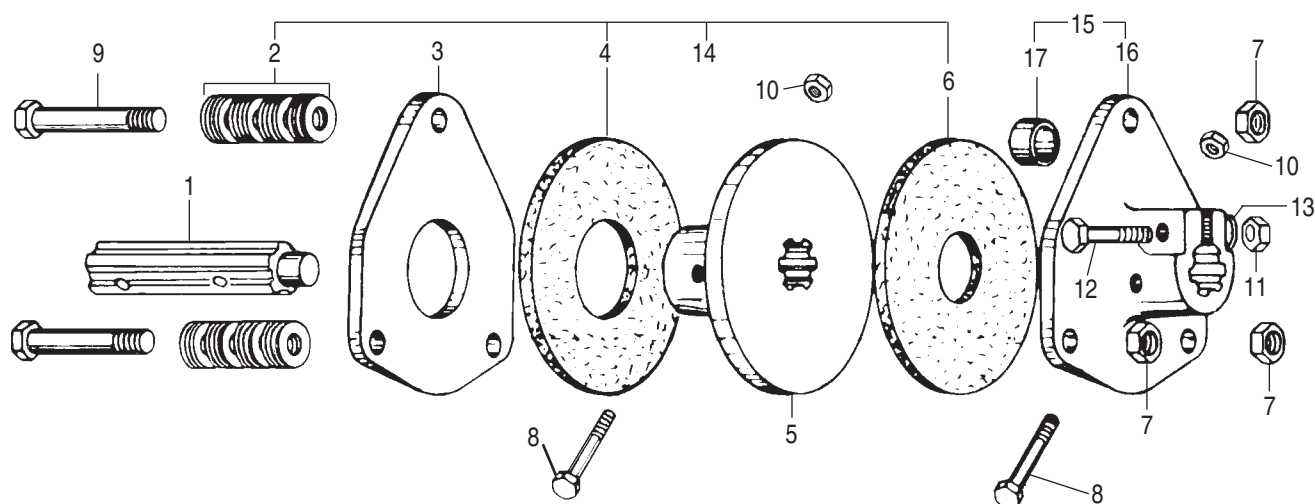
REF. NO.	PART NO.	QTY.	DESCRIPTION
1	28	1	Grease Plug
2	33	1	Key
3	37	1	Lockwasher (For Old LH 1-1/4" Nut)
	44096	1	Lockwasher (For New RH 1-3/8" Nut)
4	38	1	Nut (For Old 1-1/4"-12 UNF Thread Shaft)
	61482	1	Nut (For New 1-3/8"-12 UNF RH Thread Shaft)
5	1007	2	Seal
6	92	4	Bearing Cone
7	93	4	Bearing Cup
8	1008	1	Seal
9	1257	2	Gear Nut (1-3/8"-18 UNEF w/Roll Pin in Nut)
	61483	2	Gear Nut (1-3/8"-12 UNEF w/o Roll Pin in Nut)
10 & 11	6122	2	Gear 17T
12	61670	1	Shaft Kit (For 6202 Shaft)
13	6248-2	A/R	Plastic Shim
14	6249-2	A/R	Plastic Shim
15	6446	1	Center Housing
16	6447	1	Upper Housing
17	61676	1	Shaft Kit (For 6891 Shaft)
18	23	1	Lower Housing
19	—	12	Lockwasher 1/2"
20	20005	12	Bolt 1/2" x 1-1/2" Gr. 5
21	15392	2	Roll Pin 3/16" x 3/4"
22	1872	1	Housing with Cups
23	7997	1	Housing with Cups



*NOTE: ALL METAL AND PLASTIC SHIELDING with spherical bells have been replaced by 87373 Universal Shield Kit. Items 15-18 are available for replacement when old metal or plastic shields are in good working order.

35R (CATEGORY 4) DRIVESHAFT ASSEMBLIES
(OBSOLETE) DRIVESHAFT ASSY. "A" LENGTH 31" 540 RPM (Order 93046 for Complete Shaft)
(OBSOLETE) DRIVESHAFT ASSY. "A" LENGTH 36" 540 RPM (Order 93045 for Complete Shaft)

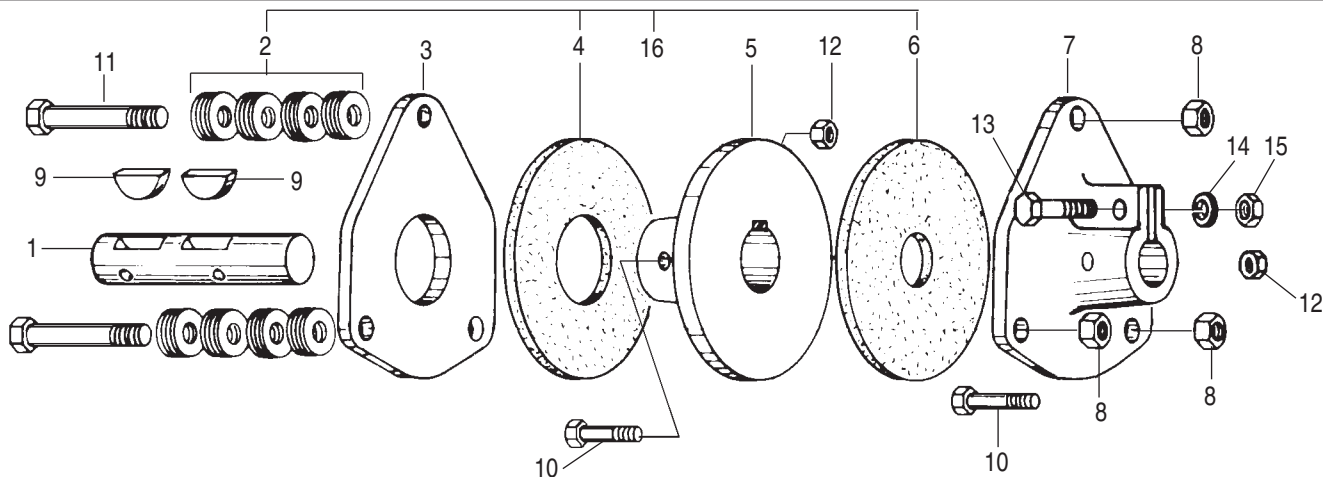
REF. NO.	PART NO.	QTY.	DESCRIPTION
1	65301	1	Shielded Front Half Assy. 31"
	87578	1	Shielded Front Half Assy. 36"
2	65302	1	Shielded Rear Half Assy. 31"
	87385	1	Shielded Rear Half Assy. 36"
3	326	1	Yoke & Tube (Length 17-1/4")
	127	1	Yoke & Tube (Length 22-1/4")
4	327	1	Yoke & Shaft (Length 17-1/2")
	128	1	Yoke & Shaft (Length 22-1/2")
5	15007	1	Bolt for Non Recessed Yoke 5/16" x 3" Gr. 8
	44425	1	Bolt for Recessed Yoke 5/16" x 2-1/2" Gr. 8
6	15602	1	Locknut 5/16"
7	595	2	Cross Bearing Kit
8	87224	1	Tractor Yoke (540 RPM 1-3/8" - 6 Spline)
	262	1	Tractor Yoke (540 RPM 1-1/8" - 6 Spline)
9	87479	1	Implement Yoke 1-3/8"
10	87442	1	Q.D. Repair Kit
11	78608	1	Danger Decal
12	78786	1	Danger Decal
13	87373	1	Universal Shield Assy. w/Bearings (Replaces All Styles of Shielding)
14	50012234	4	Shield Bearing for Universal Shielding
*15	63292	6	Shield Bearing for Plastic Shield (Spherical Bell)
*16	354	2	Bearing (Metal Shield, Spherical Bell)
*17	382	2	Thrust Washer (Metal Shield, Spherical Bell)
*18	381	2	Snap Ring (Metal Shield, Spherical Bell)
19	60808	1	Bearing Ring



368-1 SLIP CLUTCH

REF. NO.	PART NO.	QTY.	DESCRIPTION
1	369-1	1	Jackshaft
2	370	36	Belleville Spring Washer
3	371	1	Input Pressure Plate
4	372-1	1	Clutch Facing
5	373-1	1	Power Input Plate
6	374	1	Clutch Facing
7	15653	3	Jamnut 5/8" NF
8	15007	2	Bolt 5/16" x 3" Gr. 8
9	44120	3	Bolt 5/8" x 3-3/4" Gr. 5

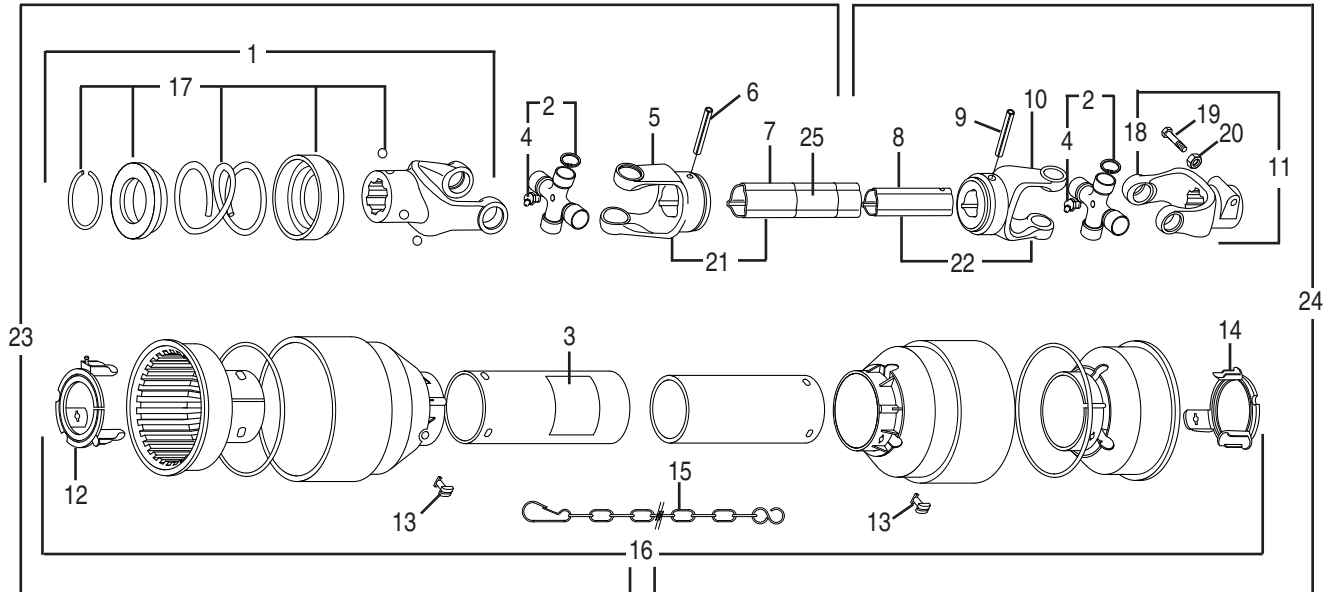
REF. NO.	PART NO.	QTY.	DESCRIPTION
10	20962	2	Locknut 5/16" NF
11	—	2	Nut 5/8"
12	—	2	Bolt 5/8" x 3-3/4" Gr. 5
13	—	2	Lockwasher 5/8"
14	88922	1	Facing Repair Kit
15	375-3	1	Pressure Plate Assembly
16	375-1	1	Pressure Plate
17	6566	1	Bushing



368 SLIP CLUTCH

REF. NO.	PART NO.	QTY.	DESCRIPTION
1	369	1	Jackshaft
2	370	48	Belleville Spring Washer
3	371	1	Input Pressure Plate
4	372-1	1	Clutch Facing
5	373	1	Power Input Plate
6	374	1	Clutch Facing
7	375	1	Pressure Plate
8	15653	3	Nut 5/8" NF

REF. NO.	PART NO.	QTY.	DESCRIPTION
9	85	2	Key
10	15007	2	Bolt 5/16" x 3" Gr. 8 NF
11	44120	3	Bolt 5/8" x 3-3/4" Gr. 5
12	20962	2	Locknut 5/16" NF
13	—	2	Bolt 5/8" x 2-1/2" Gr. 5
14	—	2	Lockwasher 5/8"
15	476	2	Locknut 5/8"
16	88922	1	Facing Repair Kit



76746 DRIVESHAFT ASSEMBLY

Manufactured by Comer / EG
Replaces 93045 Driveshaft

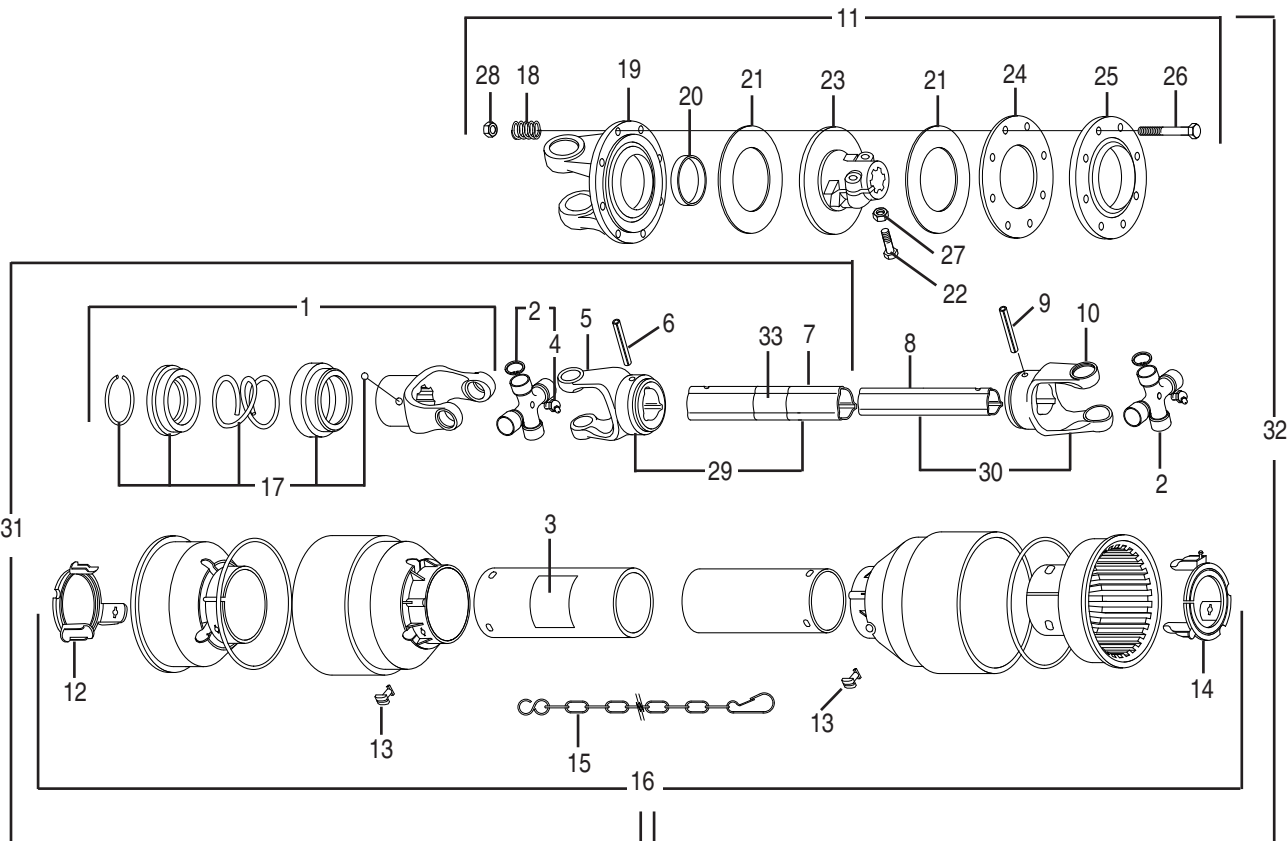
REF. NO.	PART NO.	QTY.	DESCRIPTION
1	76802	1	Complete Collar Yoke
2	64663	2	Cross Journal Set
3	78608	1	Danger Decal, Outer Shield
4	63956	2	Grease Nipple
5	66865	1	Outer Yoke
6	66866	1	Roll Pin For Outer Tube
7	76378	1	Outer Tube
8	76379	1	Inner Tube
9	66869	1	Roll Pin For Inner Tube
10	66870	1	Inner Yoke
11	76337	1	Complete Yoke
12	76057	1	Guard Retaining Collar, Outer
13	87992	6	Bolt
14	76059	1	Guard Retaining Collar, Inner
15	64814	2	Safety Chain
16	76380	1	Complete Shield
17	50017480	2	Ball Collar Kit 1-3/8"
18	—	1	Yoke
19	44458	1	Capscrew M10 x 1.5 x 65
20	44154	1	Hex Nut M10 x 1.5
21	—	1	Female Tube Yoke w/ Roll Pin
22	—	1	Male Tube Yoke w/ Roll Pin
23	76813	1	Half Female Shaft w/ Shield
24	76382	1	Half Male Shaft w/ Shield
25	78786	1	Danger Decal, Outer Tube

76062 Push Pin Set

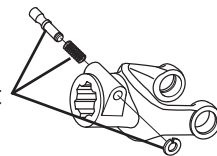
Note: Some early driveshafts were shipped with push pins on the tractor yoke end. Order 76062 push pin set to replace pin. Order 76802 for complete yoke replacement.

76064 Taper Pin Kit

Note: Some early driveshafts were shipped with taper pins on the implement yoke end. Order 76064 taper pin kit to replace pin. If the yoke is required it must be replaced by the yoke with a clamp bolt. Order items 18, 19 & 20 shown above.



76062 Push Pin Set

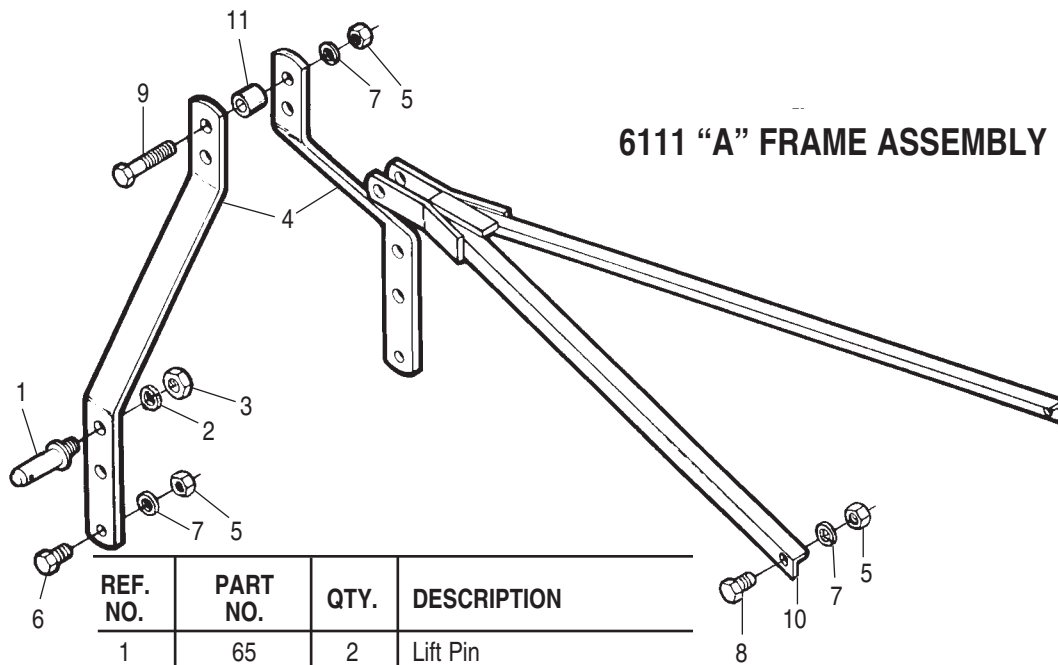


7677 DRIVESHAFT ASSEMBLY
 Manufactured by Comer / EG
 Replaces 93046 Driveshaft

Note: Some early driveshafts were shipped with push pins on the tractor yoke end. Order 76062 push pin set to replace pin. Order 76802 for complete yoke replacement.

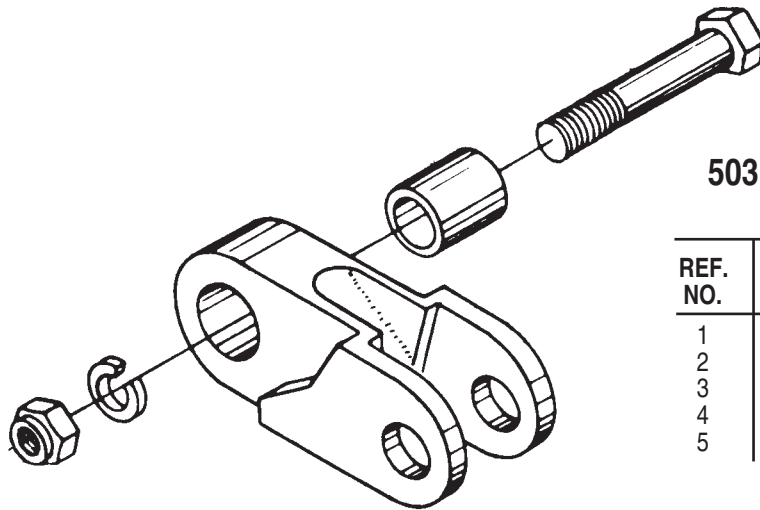
REF. NO.	PART NO.	QTY.	DESCRIPTION
1	76802	1	Complete Collar Yoke
2	64663	2	Cross Journal Set
3	78608	1	Danger Decal, Outer Shield
4	63956	2	Grease Nipple
5	66865	1	Outer Yoke
6	66866	1	Roll Pin For Outer Tube
7	76378	1	Outer Tube
8	76379	1	Inner Tube
9	66869	1	Roll Pin For Inner Tube
10	66870	1	Inner Yoke
11	76383	1	Complete Disc Clutch
12	76057	1	Guard Retaining Collar, Outer
13	87992	6	Bolt
14	76059	1	Guard Retaining Collar, Inner
15	64814	2	Safety Chain
16	76384	1	Complete Shield
17	50017480	1	Ball Collar Kit 1-3/8"

REF. NO.	PART NO.	QTY.	DESCRIPTION
18	76080	8	Spring
19	76164	1	Flanged Yoke
20	76082	1	Bushing
21	76083	2	Lining Ring
22	44499	2	Capscrew M12 x 1.5 x 65
23	76332	1	Clutch Support
24	76085	1	Inner Plate
25	76086	1	Pressure Plate
26	44155	8	Capscrew M10 x 1.5 x 85
27	44297	2	Hex Nut M12 x 1.5
28	44154	8	Hex Nut M10 x 1.5
29	—	1	Female Tube Yoke w/ Roll Pin
30	—	1	Male Tube Yoke w/ Roll Pin
31	76813	1	Half Female Shaft w/ Shield
32	76386	1	Half Male Shaft w/ Shield
33	78786	1	Danger Decal, Outer Tube



6111 "A" FRAME ASSEMBLY

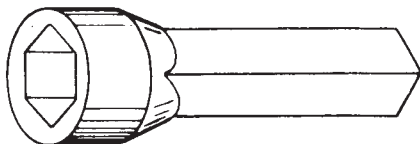
REF. NO.	PART NO.	QTY.	DESCRIPTION
1	65	2	Lift Pin
2	—	2	Lockwasher 7/8"
3	67	2	Hex Nut 7/8" NF
4	218	2	Strut
5	—	5	Hex Nut 5/8"
6	—	2	Cap screw 5/8" x 2" Gr. 5
7	—	5	Lockwasher 5/8"
8	—	2	Cap screw 5/8" x 1-3/4" Gr. 5
9	—	1	Cap screw 5/8" x 4-1/2" Gr. 5
10	60440	1	Yoke Weldment
11	60755	1	Bushing



503 FLEXIBLE LINK ASSEMBLY

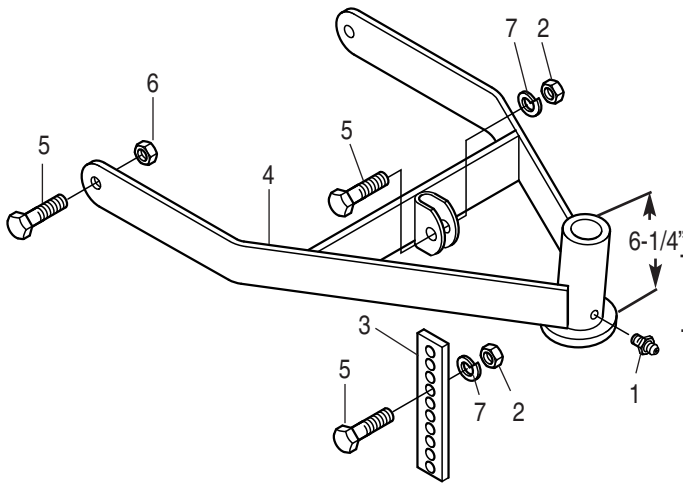
REF. NO.	PART NO.	QTY.	DESCRIPTION
1	6438	1	Flexible Link
2	6567	1	Bushing
3	—	1	Bolt 3/4" x 4-1/2" Gr. 5
4	—	1	Nut 3/4" - 10 UNC
5	—	1	Lockwasher 3/4"

6432 BLADE NUT WRENCH



276 SEAL INSTALLING TOOL

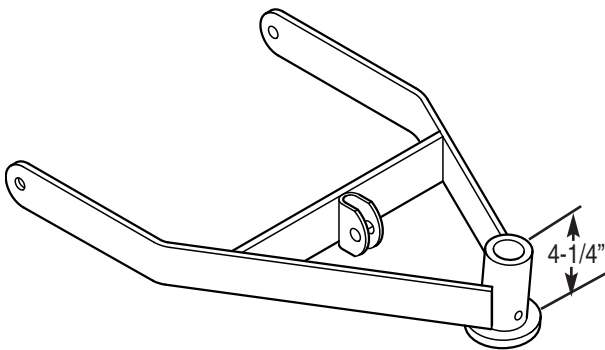




12256 TAILWHEEL FRAME ASSEMBLY

Used On: New Style Tailwheel
with Lock Collar Mount from 1972 on.

REF. NO.	PART NO.	QTY.	DESCRIPTION
1	449	1	Grease Fitting
2	—	2	Nuts 5/8" - 11 UNC
3	6322	1	Adjusting Link
4	88345	1	Tailwheel Frame Weld.
5	—	4	Capscrew 5/8" - 11 UNC x 2"
6	20414	2	Locknuts, Flanged 5/8" - 11 UNC
7	—	2	Lockwashers 5/8" Medium



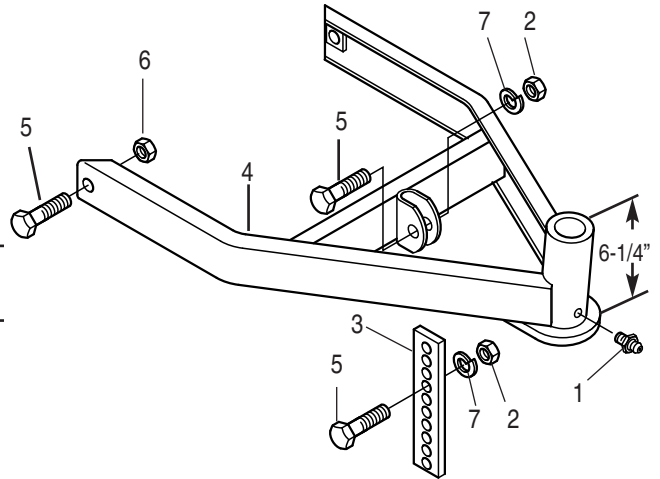
7414-1 TAILWHEEL FRAME WELDMENT

Used On: Old Style Tailwheel with Locknut Mount. Up to 1972.
For all other Repair Parts see 12256 assembly.

12254 HEAVY DUTY TAILWHEEL FRAME ASSEMBLY

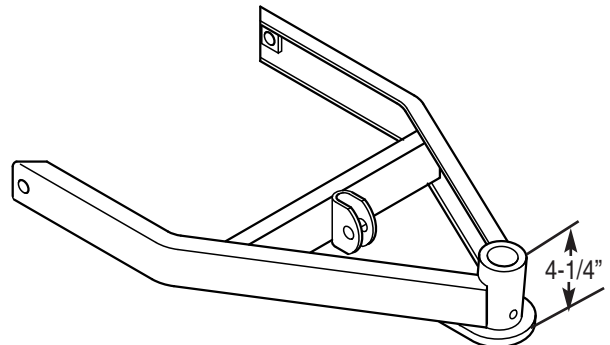
Used On: New Style Tailwheel with Lock Collar Mount

REF. NO.	PART NO.	QTY.	DESCRIPTION
1	449	1	Grease Fitting
2	—	2	Nuts 5/8" - 11 UNC
3	6322	1	Adjusting Link
4	12255	1	Tailwheel Frame Weldment
5	—	4	Capscrew 5/8" - 11 UNC x 2"
6	20414	2	Locknuts, Flanged 5/8" - 11 UNC
7	—	2	Lockwashers 5/8" Medium



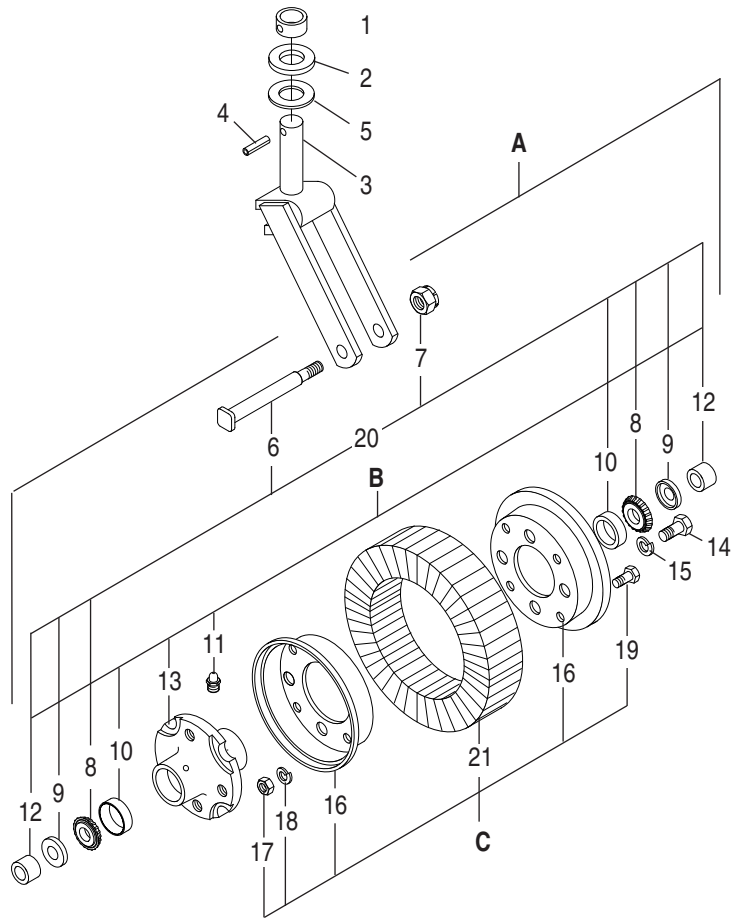
7418-1 OLD STYLE HEAVY DUTY TAILWHEEL FRAME WELDMENT

Used On: Old Style Tailwheel with Locknut Mount up to 1972.
For all other Repair Parts, see the 12254 Assy.



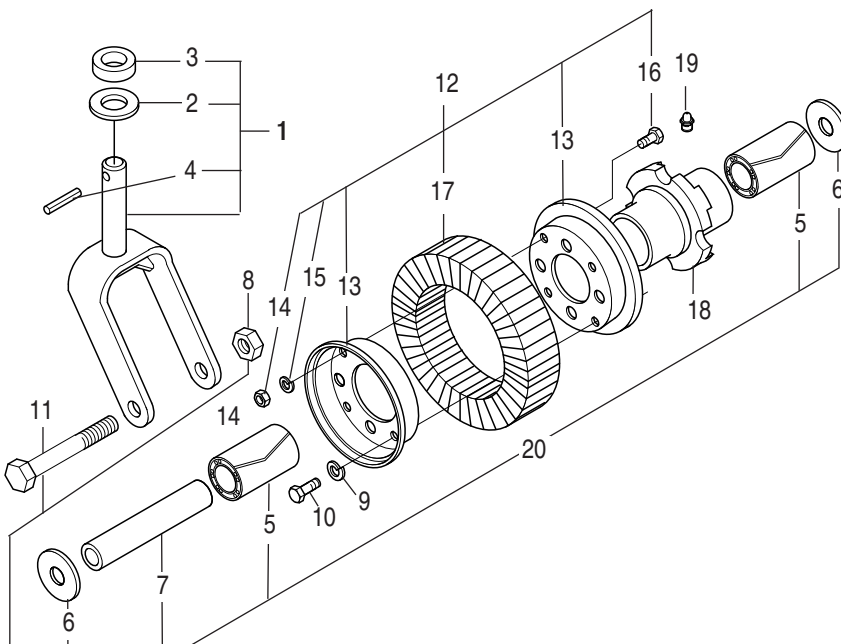
OLD STYLE TAILWHEEL

REF. NO.	PART NO.	QTY.	DESCRIPTION
1	12262	1	Lock Collar
2	11770	1	Flatwasher
3	7417	1	Fork Weldment
4	19427	1	Roll Pin
5	6138	1	Flatwasher
A	215	1	Hub & Wheel Assembly
6	1317	1	Spindle
7	15622	1	Locknut 3/4" - 10 UNC
B	211	1	Hub Assembly
8	22	2	Bearing Cone
9	30	2	Seal
10	170	2	Bearing Cup
11	449	1	Grease Fitting
12	6103-35	2	Spacer
13	1311	1	Hub w/Cups
14	15051	4	Bolts 1/2" x 1" Gr. 5 NF
15	—	4	Lockwasher 1/2"
C	500	1	Wheel Assembly
16	233	2	Flange
17	—	4	Hex Nut 3/8"
18	—	4	Lockwasher 3/8"
19	—	4	Bolt 3/8" x 1" Gr. 5
20	88919	1	Bearing Repair Kit
21	56	1	Tire

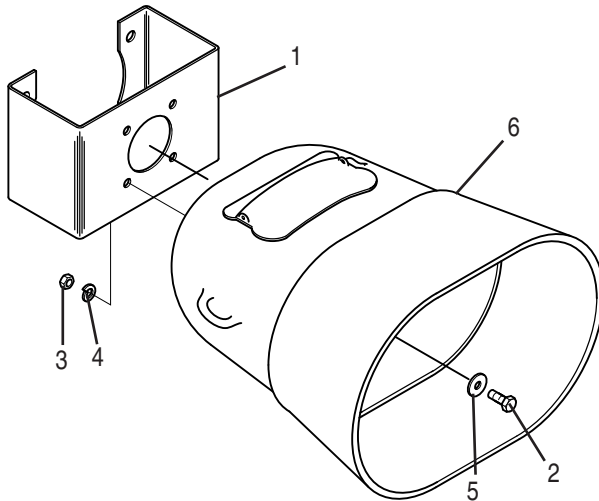


12269 TAILWHEEL ASSEMBLY

REF. NO.	PART NO.	QTY.	DESCRIPTION
1	94489	1	Fork Assembly
2	11778	1	Flatwasher
3	12262	1	Lock Collar
4	19427	1	Roll Pin
5	12834	1	Wheel & Hub Assembly
6	12250	2	Roller Bearings
7	12261	2	Wear Washers
8	12263	1	Spacer Tube
9	20638	1	Locknut 3/4"
10	—	4	Lockwasher 1/2"
11	—	4	Capscrew 1/2" x 1" Gr. 5
12	20946	1	Bolt 3/4" x 8" Gr. 5
13	500	1	Tire Assembly
14	233	2	Wheel Flanges
15	—	4	Nuts 3/8" x 9 UNC
16	—	4	Lockwashers 3/8"
17	—	4	Capscrew 3/8" x 1" Gr. 5
18	56	1	Tire
19	12268	1	Hub Assembly
20	449	1	Grease Fitting
21	88920	1	Bearing Repair Kit



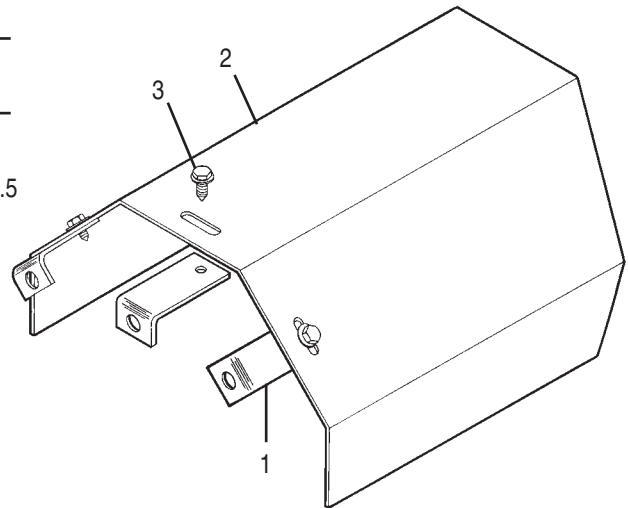
**SHIELD ASSEMBLY
FOR MODELS WITH EG DRIVELINES**



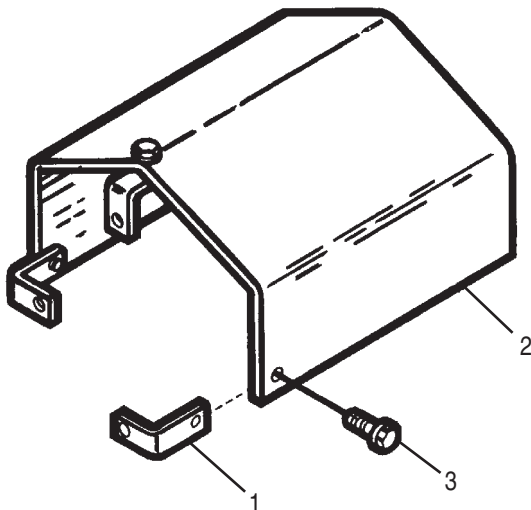
REF. NO.	PART NO.	QTY.	DESCRIPTION
1	94504	1	Shield Bracket
2	—	4	Capscrew 5/16" x 3/4" Gr.5
3	—	4	Hex Nut 5/16"
4	—	4	Lockwasher 5/16"
5	—	4	Flatwasher 5/16"
6	81592	1	Input Shield

12991 INPUT HOUSING SHIELD ASSEMBLY

REF. NO.	PART NO.	QTY.	DESCRIPTION
1	12990	3	Shield Lug
2	12993	1	Input Housing Shield
3	44039	3	Sheet Metal Screw 1/4" x 1/2" Gr.5



**11302 SHIELD ASSEMBLY
(SLIP CLUTCH)**

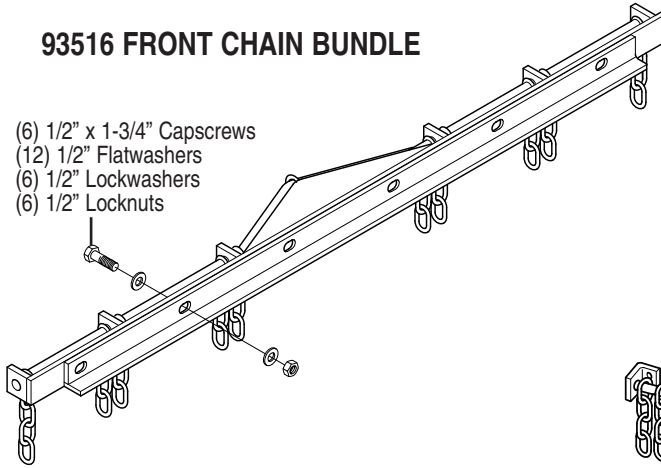


REF. NO.	PART NO.	QTY.	DESCRIPTION
1	11301	3	Mounting Bracket
2	11303	1	Shield
3	44039	3	Self-Tapping Screw 1/4" x 1/2" Gr.5

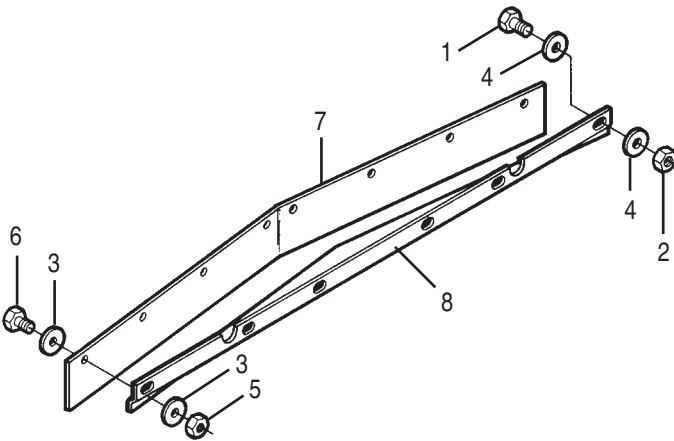
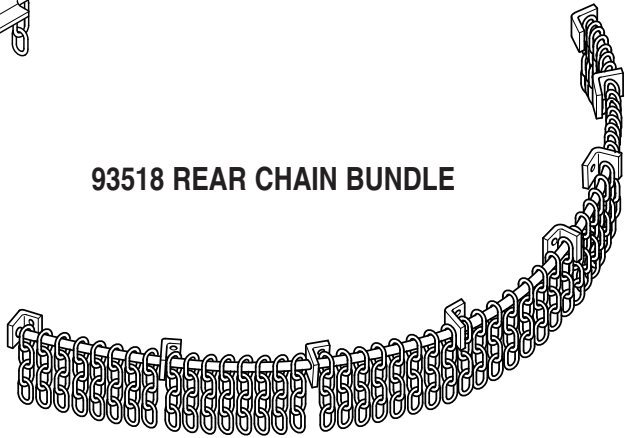
HIGHWAY CHAIN ASSEMBLIES (OPTIONAL)

93516 FRONT CHAIN BUNDLE

- (6) 1/2" x 1-3/4" Capscrews
- (12) 1/2" Flatwashers
- (6) 1/2" Lockwashers
- (6) 1/2" Locknuts



93518 REAR CHAIN BUNDLE



82598 FRONT DEFLECTOR KIT

REF. NO.	PART NO.	QTY.	DESCRIPTION
1	—	6	Capscrew 1/2" x 1-1/2" Gr.5
2	15554	6	Locknut 1/2"
3	—	16	Flatwasher 3/8"
4	—	12	Flatwasher 1/2"
5	20363	8	Locknut 3/8"
6	—	8	Capscrew 3/8" x 1-1/4" Gr.5
7	81824	1	Front Belting Hanger
8	82600	1	Front Belting Hanger

82727 FRONT GUARD ASSEMBLY

REF. NO.	PART NO.	QTY.	DESCRIPTION
1	—	2	Capscrew 1/2" x 1-1/2" Gr.5
2	—	4	Flatwasher 1/2"
3	6553	1	Front Guard
4	—	2	Lockwasher 1/2"
5	—	2	Hex Nut 1/2"

